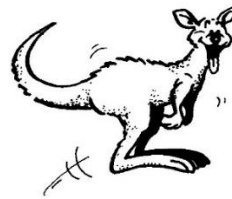
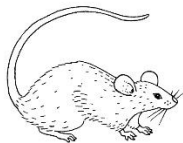
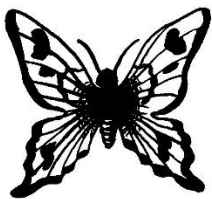
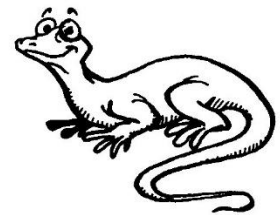
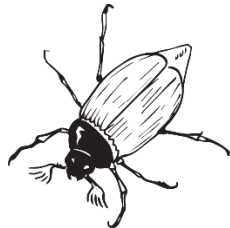
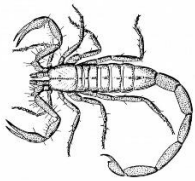
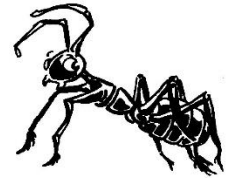
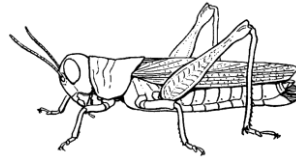
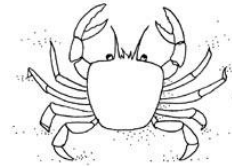
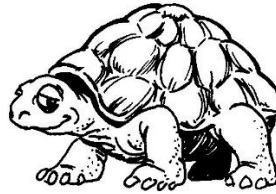
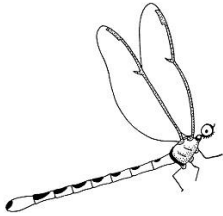
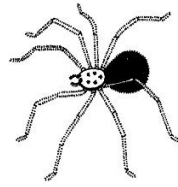
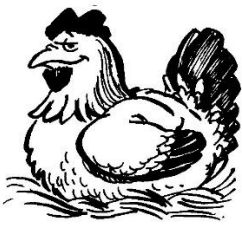
 Sciences : Le classement des animaux -les membres-

On classe les êtres vivants **sur ce qu'ils ont** (des poils, des vertèbres, des plumes, pattes ...). On ne classe pas les êtres vivants sur ce qu'ils n'ont pas, ce qu'ils font (nager, voler, manger des plantes ...) ou sur l'endroit où ils vivent.

❶ Colorie et découpe les animaux. Colle-les dans le tableau selon ce qu'ils ont.

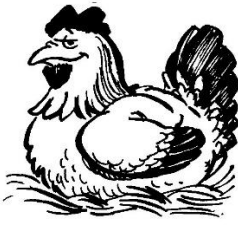

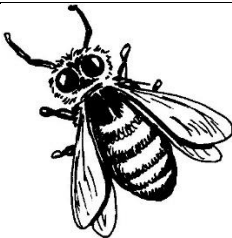
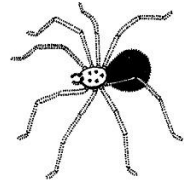
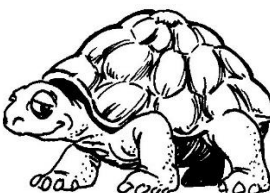

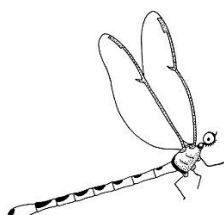
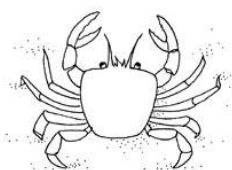

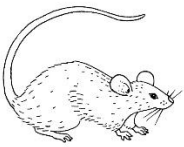
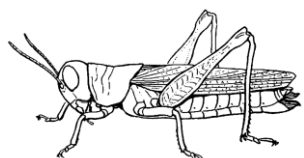
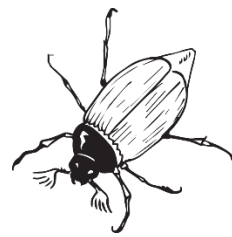

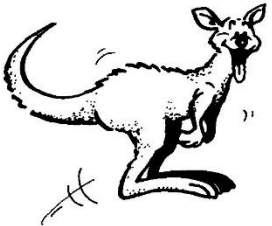
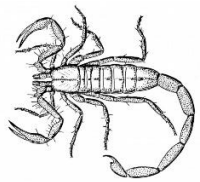


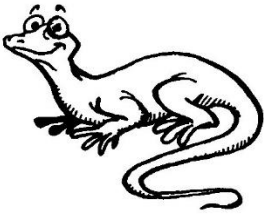
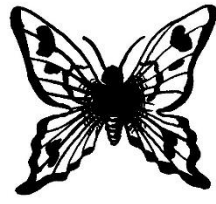

J'ai des pattes formées d'os articulés		J'ai des membres dépourvus d'os	



② Ecris sous chaque animal son nom : *abeille, araignée, grenouille, crabe, aigle, fourmi, lézard, souris, coccinelle, papillon, humain, scorpion, cigale, tortue, libellule, poule, cigogne, chauve-souris, hanneton, kangourou*

Trace écrite : Une patte peut être une patte articulée formée d'os ou un membre dépourvu d'os mais formé de segments rigides (peau durcie) articulés entre eux.

## CORRECTION

J'ai des pattes formées d'os articulés		J'ai des membres dépourvus d'os	
			
<b>poule</b>	<b>grenouille</b>	<b>abeille</b>	<b>araignée</b>
			
<b>tortue</b>	<b>chauve-souris</b>	<b>libellule</b>	<b>crabe</b>
			
<b>aigle</b>	<b>souris</b>	<b>cigale</b>	<b>hanneton</b>
			
<b>humain</b>	<b>kangourou</b>	<b>scorpion</b>	<b>fourmi</b>
			
<b>cigogne</b>	<b>lézard</b>	<b>papillon</b>	<b>coccinelle</b>