

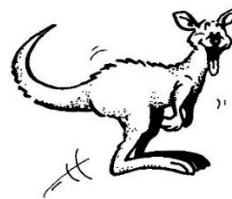
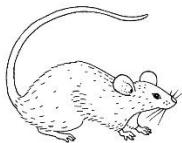
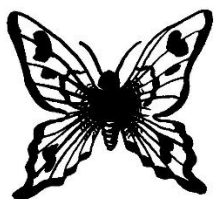
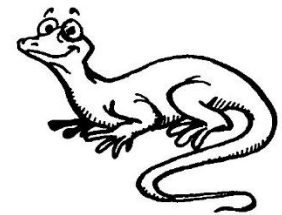
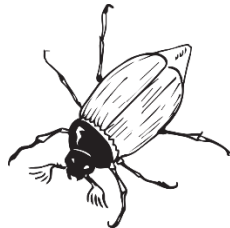
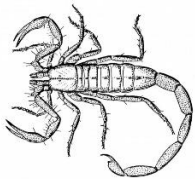
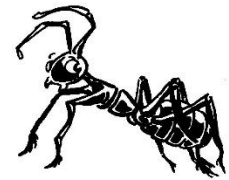
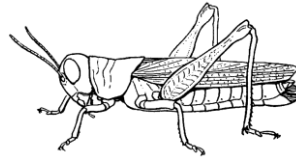
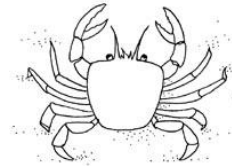
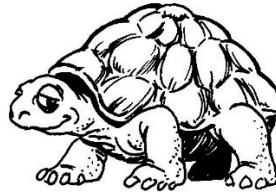
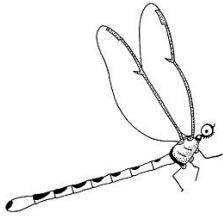
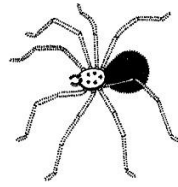
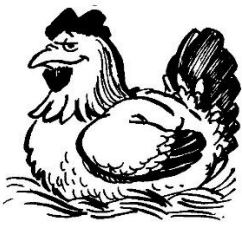
 Sciences : Le classement des animaux -les tétrapodes-

On classe les êtres vivants **sur ce qu'ils ont.**

Les tétrapodes sont des êtres vivants à squelette interne avec quatre membres.

❶ Colorie et découpe les animaux. Colle-les dans le tableau selon qu'ils ont ou pas.

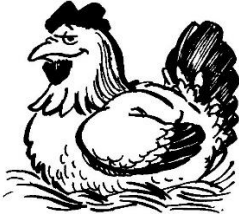


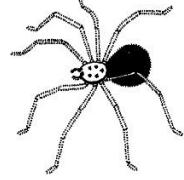
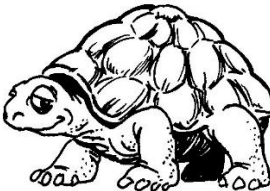

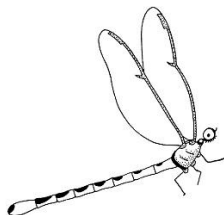
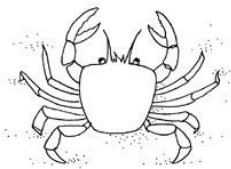


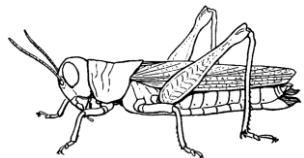


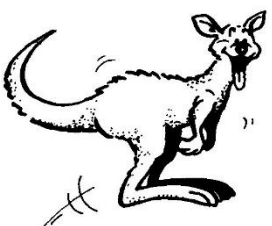
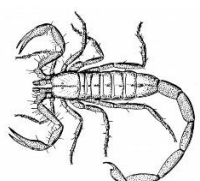
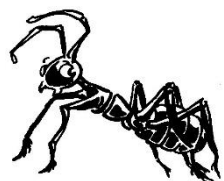

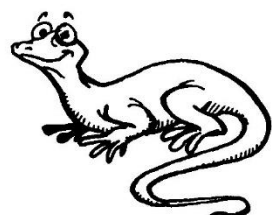
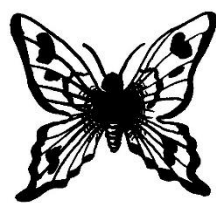

J'ai quatre membres et un squelette interne		Je n'ai pas quatre membres et un squelette interne	



② Ecris sous chaque animal son nom : *abeille, araignée, grenouille, crabe, aigle, fourmi, lézard, souris, coccinelle, papillon, humain, scorpion, cigale, tortue, libellule, poule, cigogne, chauve-souris, hanneton, kangourou*

Trace écrite : Les tétrapodes sont des animaux vertébrés principalement terrestres. Ils se reconnaissent parce qu'ils possèdent quatre pattes pourvues de doigts (d'où leur nom de tétrapodes, qui veut dire "quatre pattes"). Les oiseaux et les chauves-souris sont bien des tétrapodes dont les pattes avant, au cours de l'évolution, se sont transformées pour voler : on les appelle les ailes.

CORRECTION

J'ai quatre membres et un squelette interne		Je n'ai pas quatre membres et un squelette interne	
			
poule	grenouille	abeille	araignée
			
tortue	chauve-souris	libellule	crabe
			
aigle	souris	cigale	hanneton
			
humain	kangourou	scorpion	fourmi
			
cigogne	lézard	papillon	coccinelle